

DOOR NO	POSITION	DOOR TYPE	QUANTITY
D17A/P1	OFFICE	SLIDING INTERNAL DOOR	1

**SPECIFICATION:**

Wispeco Aluminium **3000OX** Aluminium Door with Glass or equal and approved top hung sliding and stacking powder coated (50 - 100µ thick) aluminium door (complying with AAAMSA performance criteria A2), size 2400.00 x 2,400.00mm high x 44mm thick glazed with 6.38mm laminated safety glass in accordance with NBR part N, SABS 0137 Edition 3 2000, SABS 0400, SABS 1263 and AAAMSA selection guide for safety glazing materials fixed inside jambs of opening.

Coupled to 600mm wide aluminium window with NO Top hung sections.

**FRAME:**

WISPECO aluminium frame/ equal and approved (No timber subframe: NK26 stiffening mullion by specialist if required), or equal approved.

**GLAZING:**

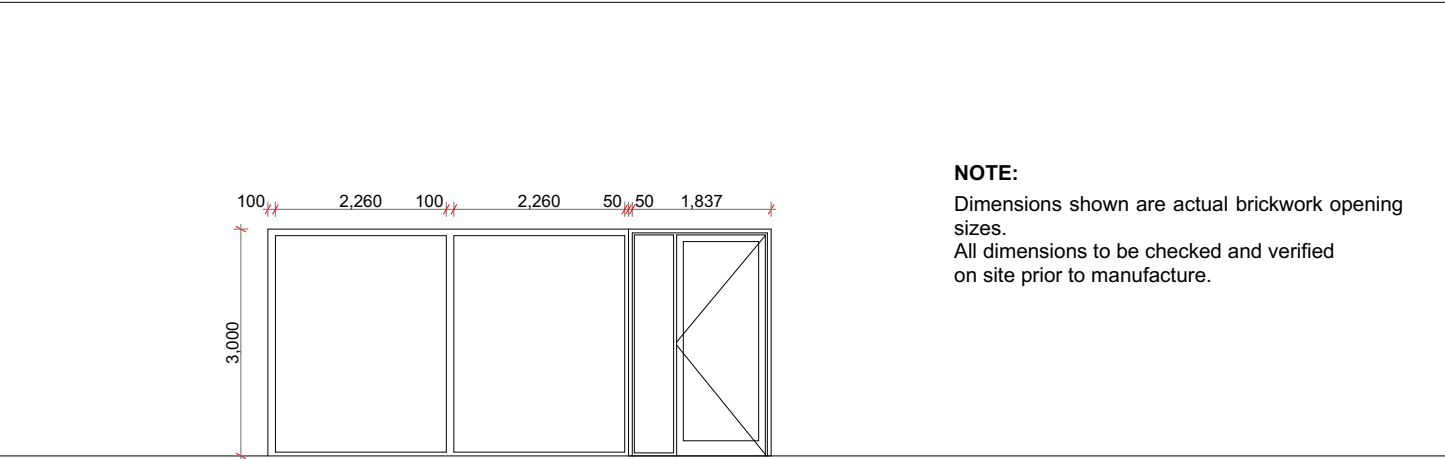
6.38 mm laminated safety glazing to fixed and opening sections.

**FINISH:**

Black powder coated 25 micron.

**EXTRAS:**

nil



DOOR NO	POSITION	DOOR TYPE	QUANTITY
D20/P1	OFFICE	INTERNAL AL. DOOR AND COUPLED WINDOW	1

**DESCRIPTION**

900 x 2100 mm High aluminium Double hinged door with 1 X 600mm Side light panels coupled to Curtain Wall. Leaf hung on Dorma BTS 80 with 90 deg hold open option.

**FRAME SECTION**

Wispeco Aluminium 38MM Section

**GLAZING:**

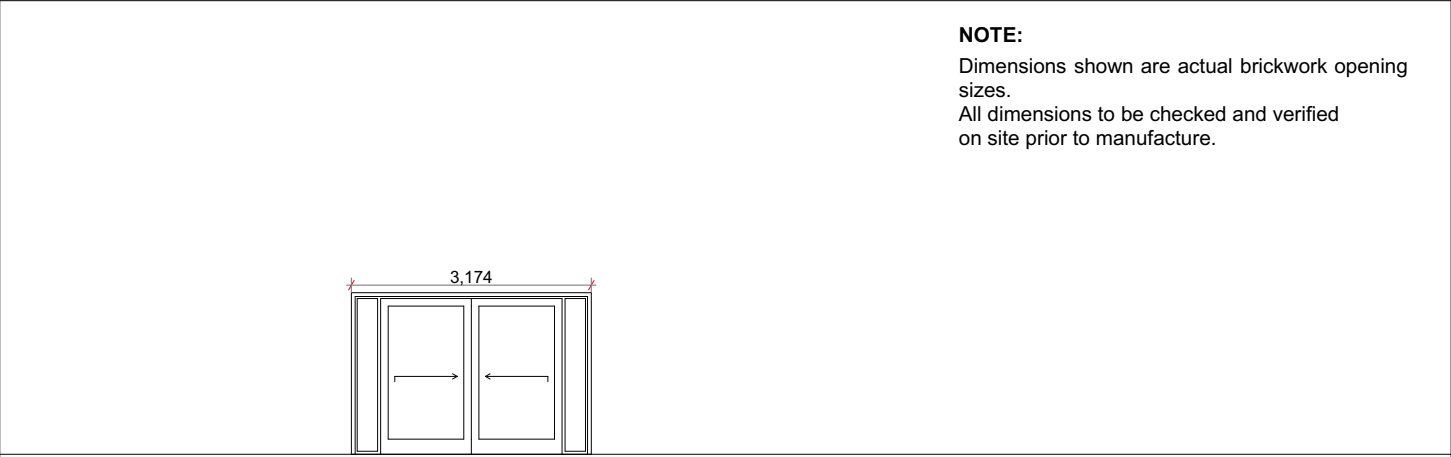
Side Panes  
6.38 mm clear Laminated safety glazing to fixed and opening sections on side panes.  
Door  
6.38mm Laminated Safety Glass

**FINISH:**

Black powder coated 25 micron.

**EXTRAS:**

nil



DOOR NO	POSITION	DOOR TYPE	QUANTITY
D17B/P1	BOARDROOM	INTERNAL DOOR	1

**SPECIFICATION:**

Wispeco Aluminium **3000OX** Aluminium Door with Glass or equal and approved top hung sliding and stacking powder coated (50 - 100µ thick) aluminium door (complying with AAAMSA performance criteria A2), size 2400.00 x 2,400.00mm high x 44mm thick glazed with 6.38mm laminated safety glass in accordance with NBR part N, SABS 0137 Edition 3 2000, SABS 0400, SABS 1263 and AAAMSA selection guide for safety glazing materials fixed inside jambs of opening.

Coupled to 400mm wide aluminium window with NO Top hung sections.

**FRAME:**

WISPECO aluminium frame/ equal and approved (No timber subframe: NK26 stiffening mullion by specialist if required), or equal approved.

**GLAZING:**

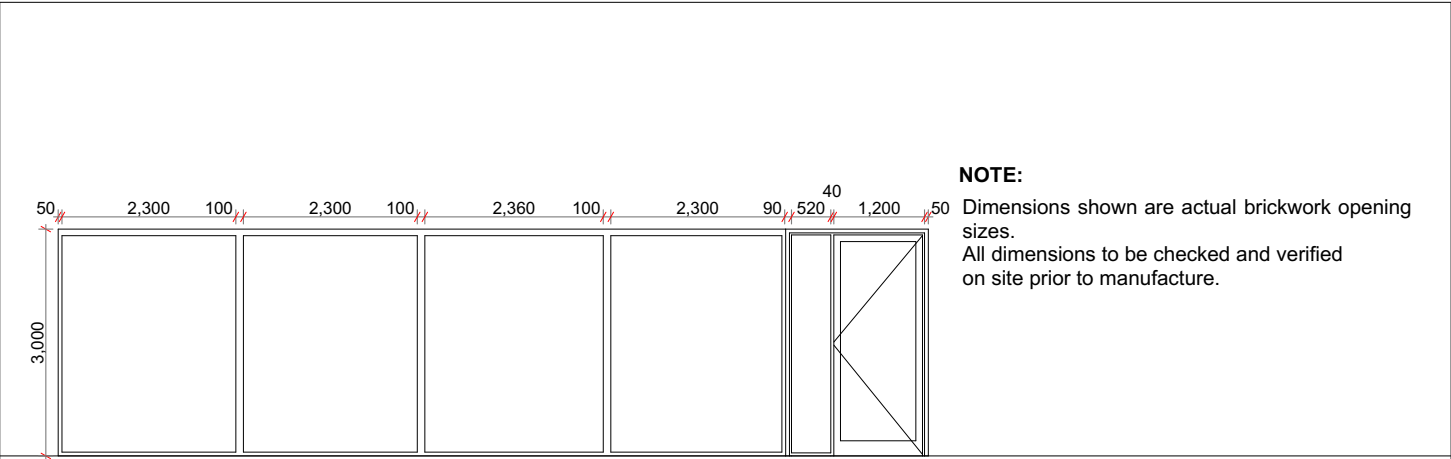
6.38 mm laminated safety glazing to fixed and opening sections.

**FINISH:**

Black powder coated 25 micron.

**EXTRAS:**

nil



DOOR NO	POSITION	DOOR TYPE	QUANTITY
D21/P1	OFFICE	INTERNAL AL. DOOR AND COUPLED WINDOW	1

**DESCRIPTION**

900 x 2100 mm High aluminium Double hinged door with 1 X 600mm Side light panels coupled to Curtain Wall. Leaf hung on Dorma BTS 80 with 90 deg hold open option.

**FRAME SECTION**

Wispeco Aluminium 38MM Section

**GLAZING:**

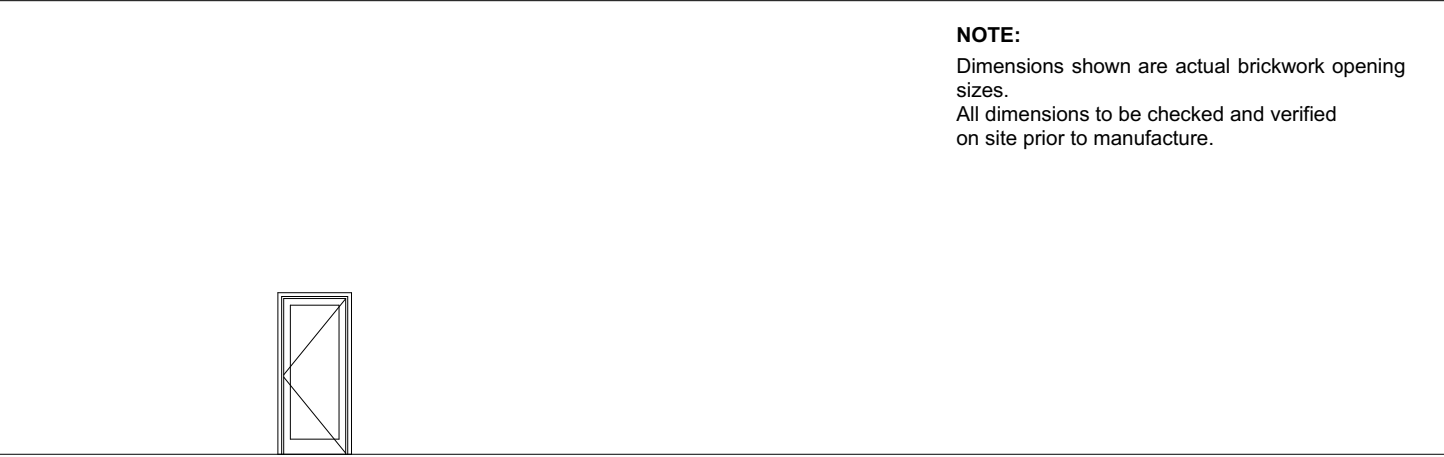
Side Panes  
6.38 mm clear Laminated safety glazing to fixed and opening sections on side panes.  
Door  
6.38mm Laminated Safety Glass

**FINISH:**

Black powder coated 25 micron.

**EXTRAS:**

nil



DOOR NO	POSITION	DOOR TYPE	QUANTITY
D18/P1	CONTROL ROOM	INTERNAL DOOR	1

**DESCRIPTION**

900 x 2100 mm High aluminium hinged pivot door with NO side light panes. Leaf hung on Dorma BTS 80 with 90 deg hold open option.

**FRAME SECTION**

Wispeco Aluminium 38MM Section

**GLAZING:**

Side Panes  
6.38 mm clear Laminated safety glazing to fixed and opening sections on side panes.  
Door  
6.38mm Laminated Safety Glass

**FINISH:**

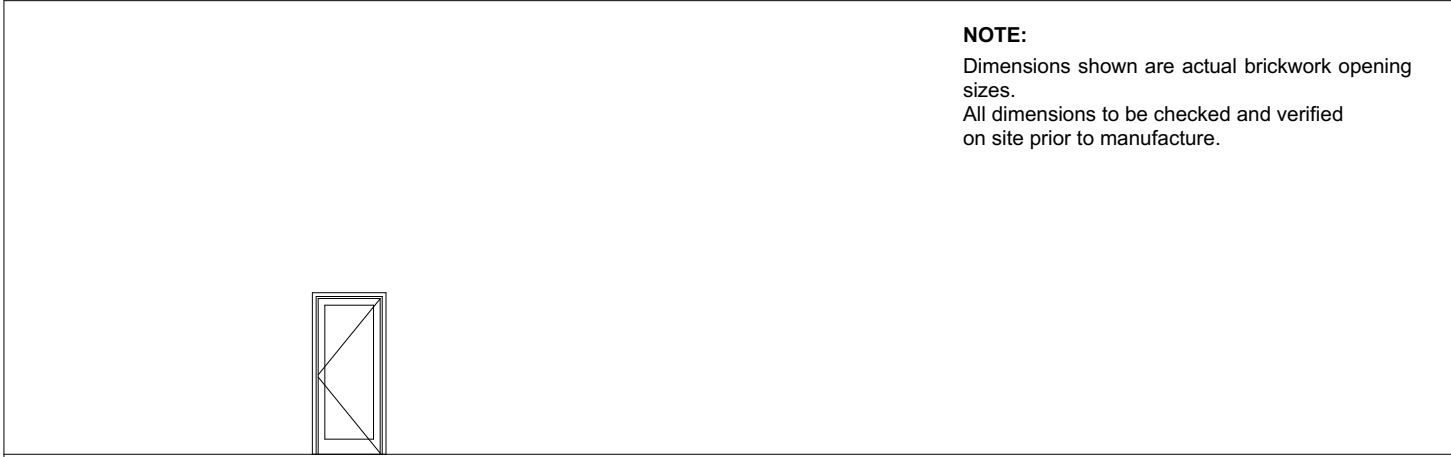
Black powder coated 25 micron.

**EXTRAS:**

nil



DOOR NO	POSITION	DOOR TYPE	QUANTITY
DXX/P1	OFFICE	INTERNAL DOOR	1



DOOR NO	POSITION	DOOR TYPE	QUANTITY
D19/P1	STORE	INTERNAL DOOR	1

**DESCRIPTION**

900 x 2100 mm High aluminium hinged pivot door with NO side light panes. Leaf hung on Dorma BTS 80 with 90 deg hold open option.

**FRAME SECTION**

Wispeco Aluminium 38MM Section

**GLAZING:**

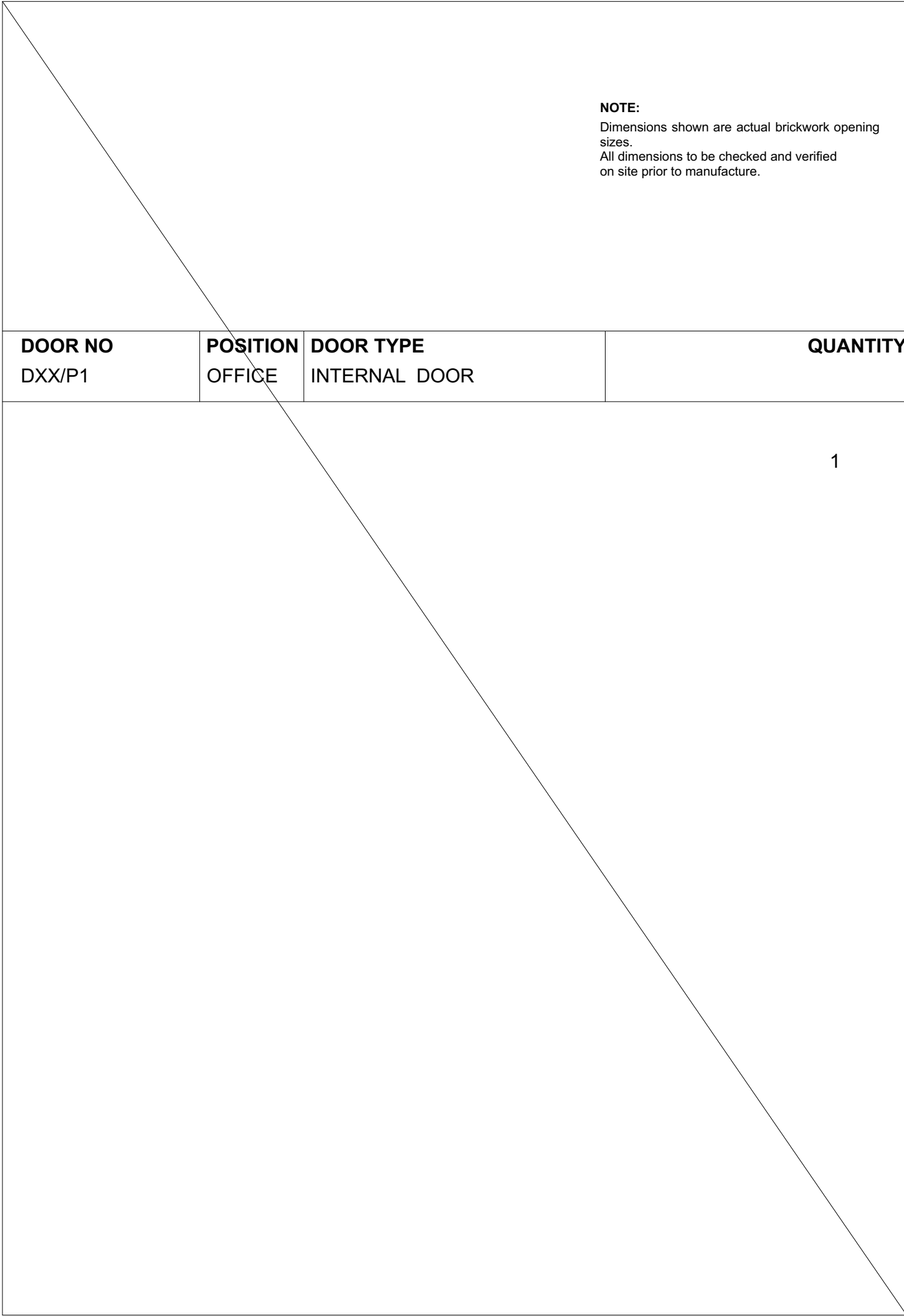
Side Panes  
6.38 mm clear Laminated safety glazing to fixed and opening sections on side panes.  
Door  
6.38mm Laminated Safety Glass

**FINISH:**

Black powder coated 25 micron.

**EXTRAS:**

nil



DOOR NO	POSITION	DOOR TYPE	QUANTITY
DXX/P1	OFFICE	INTERNAL DOOR	1



No.	DATE	DESCRIPTION	APPR	CLIENT
				EAST LONDON IDZ
				PROJECT
				REFURBISHMENT OF DIAMOND POLISHING FACTORY INTO OFFICES
				DRAWING TITLE
				NEW DOOR SCHEDULE PART 3/3
			DRAWN	DESIGNED
			HHUES	HHUES
			CHECKED	RBAM
			DATE	June,22
			SCALE	AS SHOWN
			DRAWING No.	EL-IDZ- RDF11/21-22
			Rev.	0